

PART NUMBER

QM1394B

| | | | |
|-------------|----------|-------------|--------|
| Customer | | WRITTEN BY | |
| ISSUED DATE | 17/07/28 | CHECKED BY | luping |
| Quantity | 8 EA | APPROVAL BY | |

1.0 ELECTRICAL SPECIFICATION

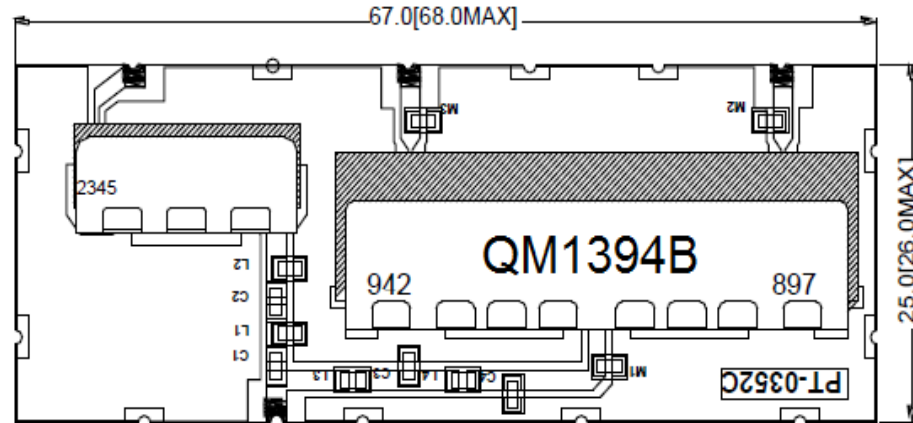
| ITEMS 项目 | CH 1 【通道1】 | | CH 2 【通道2】 | | CH 3 【通道3】 | | UNIT |
|--|-----------------------------------|--|-----------------------------------|----------------|-----------------------------------|----------------|---------|
| | +25C 常温 | -40C to+85C 全温 | +25C 常温 | -40C to+85C 全温 | +25C 常温 | -40C to+85C 全温 | 单位 |
| Center Frequency[Fc] 中心频率 | 897.0 | | 942.0 | | 2345.0 | | MHz |
| Passband 通带 | fo± 12.0 [885.0 ~ 909.0] | | fo± 12.0 [930.0 ~ 954.0] | | fo± 25.0 [2320.0 ~ 2370.0] | | MHz |
| Insert Loss 插入损耗 | 2.3 | 2.6 | 2.3 | 2.6 | 2.3 | 2.6 | dB max. |
| Ripple 波动 | 1.4 | 1.5 | 1.4 | 1.5 | 1.4 | 1.5 | dB max. |
| Return loss 回波损耗 | 17.0 | | 15.0 | | 17.0 | | dB min. |
| <input type="checkbox"/> 天线端口 <input checked="" type="checkbox"/> 所有端口 | | | | | | | |
| V S W R 驻波比 | | | | | | | max |
| <input type="checkbox"/> 天线端口 <input checked="" type="checkbox"/> 所有端口 | | | | | | | |
| Stop Band 带外抑制 | 32 dBc min. @ [DC 806.0] | | 30 dBc min. @ [DC 835.0] | | 25 dBc min. @ [DC 800.0] | | MHz |
| <input checked="" type="checkbox"/> Absolute Value 绝对值 | 30 dBc min. @ [806.0 ~ 835.0] | | 35 dBc min. @ [835.0 ~ 880.0] | | 40 dBc min. @ [800.0 1000.0] | | MHz |
| <input type="checkbox"/> Relative Value 相对值 | 5 dBc min. @ [835.0 ~ 865.0] | | 50 dBc min. @ [880.0 ~ 909.0] | | 20 dBc min. @ [1000.0 1710.0] | | MHz |
| | 50 dBc min. @ [930.0 ~ 954.0] | | 10 dBc min. @ [980.0 ~ 1100.0] | | 35 dBc min. @ [1710.0 ~ 1735.0] | | MHz |
| | 23 dBc min. @ [954.0 ~ 1710.0] | | 30 dBc min. @ [1100.0 ~ 1710.0] | | 35 dBc min. @ [1735.0 ~ 1805.0] | | MHz |
| | 30 dBc min. @ [1710.0 ~ 2010.0] | | 40 dBc min. @ [1710.0 ~ 1980.0] | | 25 dBc min. @ [1805.0 ~ 1990.0] | | MHz |
| | 45 dBc min. @ [2010.0 ~ 2025.0] | | 50 dBc min. @ [2010.0 ~ 2025.0] | | 45 dBc min. @ [2010.0 ~ 2050.0] | | MHz |
| | 30 dBc min. @ [2110.0 ~ 3000.0] | | 50 dBc min. @ [2110.0 ~ 2170.0] | | 30 dBc min. @ [2050.0 ~ 2170.0] | | MHz |
| | dBc min. @ [~] | | 30 dBc min. @ [2300.0 ~ 2700.0] | | 20 dBc min. @ [2400.0 ~ 2450.0] | | MHz |
| | dBc min. @ [~] | | 30 dBc min. @ [2700.0 ~ 3600.0] | | 15 dBc min. @ [2450.0 ~ 3530.0] | | MHz |
| Isolation | CH1--CH2 | 50dB min@885-909MHz/50dB min@930-954MHz/30dB min@909-935MHz | | | | | |
| | CH1--CH3 | 48dB min@885-909MHz/45dB min@2320-2370MHz/35dB min@909-2320MHz | | | | | |
| | CH2--CH3 | 45dB min@930-954MHz/45dB min@2320-2370MHz/35dB min@954-2320MHz | | | | | |
| Power 功率 | | | | | | | |
| In/Out Impedance 输入输出阻抗 | 50 Ω | | | | | | |
| Others 其它 | | | | | | | |
| Measurement Jig | | | | | | | |

2. MECHANICAL SPECIFICATION

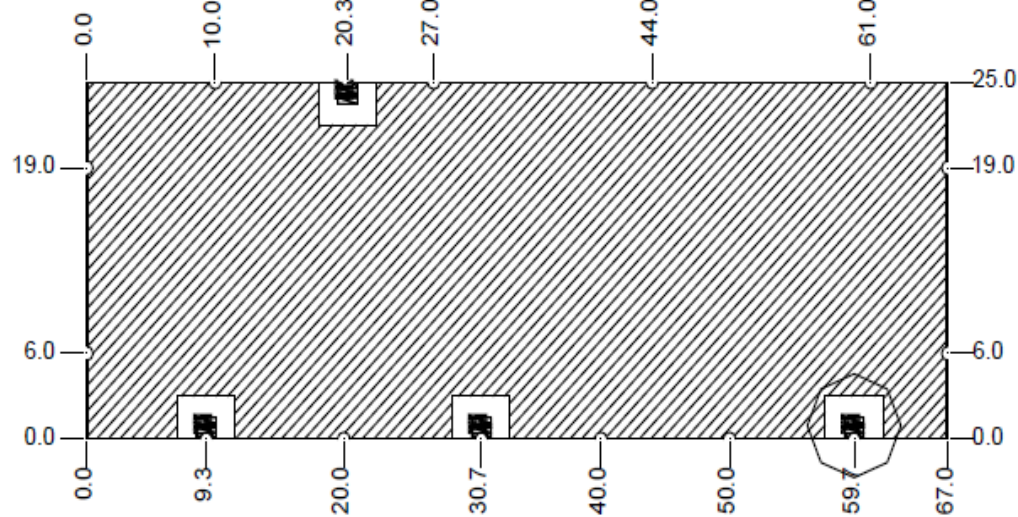
| Parameter | | |
|-----------------------|--------|--|
| Dimensions (W*D*H) | (mm) | |
| | (inch) | |

3.DIMENSION

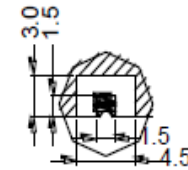
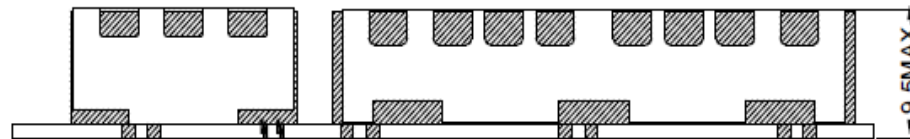
TOP VIEW



BOTTOM VIEW



FRONT VIEW



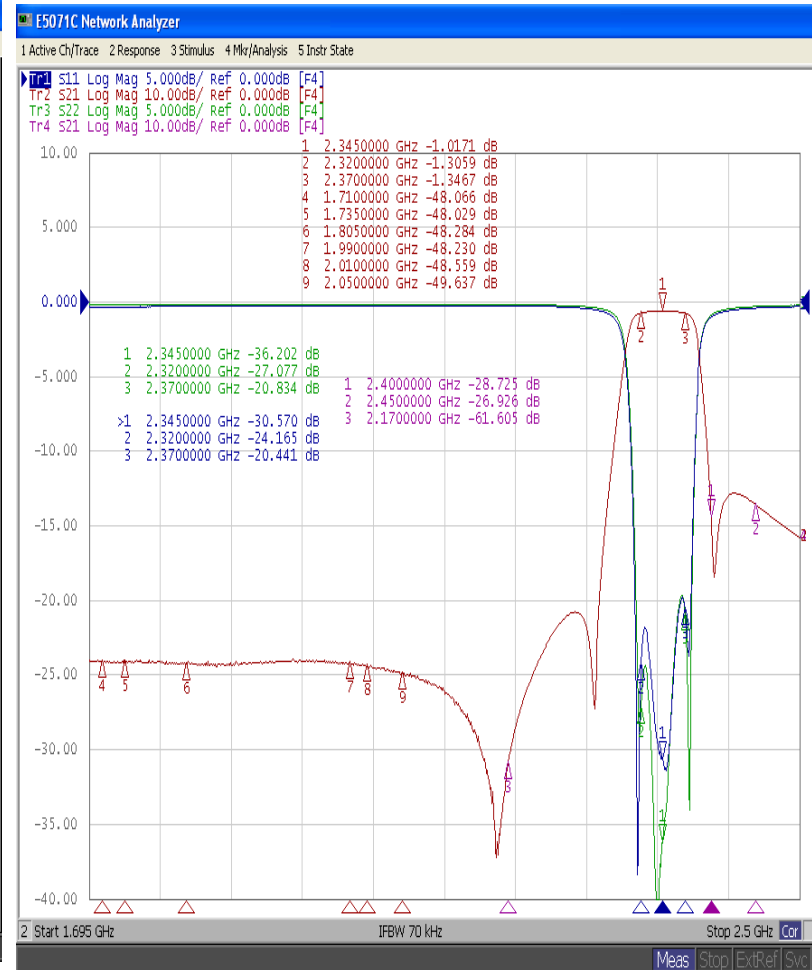
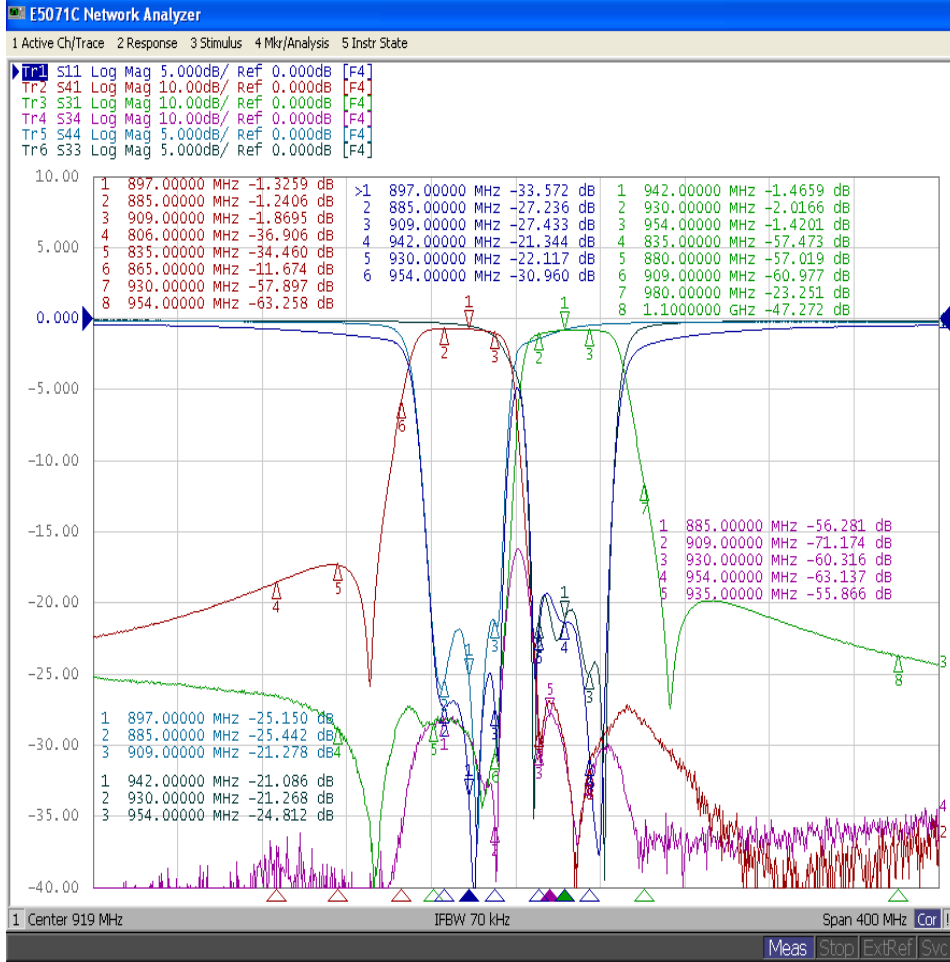
I/O PORT

GROUND

TOLERANCE : ± 0.20

UNIT: mm

4.0 CHARACTERISTICS



4.0 CHARACTERISTICS

